



groundswell  
international

# ANNUAL REPORT 2017



## HARVEST A HEALTHY FUTURE

[www.groundswellinternational.org](http://www.groundswellinternational.org)

# HARVEST A HEALTHY FUTURE

## Dear Friends,

In November 2017, we gathered our staff and partner organizations from ten countries at our global conference in Senegal.

Together we took stock of our achievements and lessons learned over the past five years. We traveled across the dry Sahel landscape – suffering a bus breakdown along the way - to meet with groups of women farmers and local government officials collaborating to improve women's access to land for production, nutrition and income. Rooted in community-level actions like these around the world, we created plans to amplify our collective impact and finalized our Strategic Framework for 2018-22.

In this annual report, we are excited to share with you how your support as allies and donors is enabling Groundswell International to have a profound impact -- and how we plan to amplify that in the future.

Over the next five years we will more than double our impact by working with 75,000 smallholder farmers to regenerate their land, harvest nutritious food and sell it in local markets. These farmer leaders will catalyze the spread of agroecology, farmer-to-farmer. Our goal is to improve the lives of 750,000 people through improved nutrition, production and incomes. Community organizations will become stronger; families will be able to send their children to school and provide them nutritious meals; women will have a strong voice and equal rights. Further, we will continue to strengthen and amplify the voices of farmers and their communities within their countries, regions and across the world.

Thank you for your commitment and for making this work possible. We hope that you will join us on this exciting journey!

Sincerely,



Steve Brescia, Executive Director



*Groundswell International Global Conference, Senegal, Nov. 2017*

Groundswell staff work with local partner organizations, who strengthen communities, who organize to transform lives. Our partners are:

- Agrecol Afrique (Senegal)
- Association Nourrir Sans Détruire (Burkina Faso)
- Boudha Bahanupati Project - Pariwar (Nepal)
- Center for Indigenous Knowledge & Organizational Development (Ghana)
- EkoRural (Ecuador)
- Partenariat pour le Développement Local (Haiti)
- La Asociación Qachuu Aloom (Guatemala)
- Sahel Eco (Mali)
- Vecinos Honduras (Honduras)



# 2017 Highlights

## Regenerative Farming

- Burkina Faso, Mali and Ghana: Over 2,300 additional farmers improved their food production and regenerated their land through agroecological experimentation.
- Honduras: 120 farmers are spreading their improved farming strategies from farmer field schools to over 1,400 families in 65 communities.
- Nepal: Over 615 farmers, mostly women, organized together to make their farm plots more productive and resilient by integrating multipurpose trees.

## Stronger Local Markets

- Haiti: Farmers' organizations established 13 small cooperative enterprises to process and sell their produce (sugar cane, cassava, peanuts, etc.), increasing local incomes and nutrition.
- Senegal: Communities organized grain banks and stored 55 metric tons of grain, increasing their food access during the 'hungry season.'
- Guatemala: Our partner Qachuu Aloom manages a cooperative enterprise to sell locally produced amaranth products and seeds.

## Women's Empowerment

- Nepal: Lower caste *Dalit* women organized 43 savings & credit groups, accumulating over \$52,000 in assets and making hundreds of small loans to members.
- Ghana, Burkina Faso and Mali: Women created 94 new savings & credit groups in 60 villages, with many accumulating over \$2,000 in savings.
- Senegal: 14 new women's groups have been organized; they negotiated access to land, and established dry season vegetable gardening.

## Climate Change Resilience

- West Africa: Our programs have supported farmers to regenerate over 44,500 acres of land through agroecology and farmer-managed natural regeneration of trees.
- Ecuador: EkoRural supports communities to develop and distribute local seed varieties that are resilient to climate change.
- Ghana: Our programs have supported 30 communities affected by drought to access water by constructing wells.

## Linking Nutrition & Agriculture

- Mali: Sahel Eco supports over 380 households in eight villages to innovate a new strategy to 'garden' with drought resistant baobab & moringa trees, providing highly nutritious leaves year round.
- Haiti: Over 9,000 farmers have developed a model of diversified agroforestry plots that provide food all throughout the year. Health promoters teach the preparation of nutritious meals from the harvest.
- Ecuador: A national campaign promotes consumption of healthy local food.

## Amplifying Results & Learning

- We published our book, *Fertile Ground: Scaling Agroecology from the Ground Up*, and presented its insights at universities, conferences, and via TV, radio and podcasts.
- We convened our Global Conference in Thies, Senegal, to promote peer-to-peer learning and action planning.
- We are working with farmers organizations in Ghana and Burkina Faso to shift government subsidies from chemical fertilizers to agroecological soil improvement.
- We are active members of the Alliance for Food Sovereignty in Africa.



# Strategic Framework: 2018-2022

## Mission

Strengthening communities to build healthy farming and food systems from the ground up.

## Approach

Groundswell coordinates and invests in programs for Action Learning and Amplification with local partner organizations and communities in three regions, by:

- Working in close partnership; identifying shared challenges together; investing in communities to generate solutions and results; and facilitating and accelerating learning across programs.
- We amplify local successes through: farmer to farmer networks; social movements; creating and sharing knowledge; and strategic collaboration with allies and donors.

## Strategies

- Deepen and spread agroecological principles and practices.
- Strengthen local market arrangements and food systems to improve both farmers' incomes and consumers' nutrition
- Collaborate with allies to shape more enabling policies for agroecology and sustainable local food systems.

## Desired Results By 2022

- **Increase from 33,000 to over 75,000 women and men smallholder farmers** who are improving their farm production through agroecological innovation.
- **Catalyze the spread of agroecology** by supporting these community leaders to build farmer-to-farmer networks in 12 countries.
- **Increase from 375,000 people to over 750,000 people** improving their lives in tangible (production, income, health) and intangible (organization, confidence, voice) ways.
- **Strengthen community resilience** to climate change in each context.
- **Contribute to stronger local food systems and enabling policies** that improve the well being of producers and consumers.

## Resources

- To achieve these goals **we will raise and invest \$2.3 million annually** in programs.
- By reaching **\$4 million annually, we can expand to 100,000 farmers and 1 million people** with improved wellbeing.



# GROUNDSWELL INTERNATIONAL: THEORY OF CHANGE

**VISION:** Sustainable, healthy, nourishing and just food and farming systems for all people and our planet.



## CHALLENGES

Unsustainable agriculture and food systems create malnutrition, poverty, environmental degradation, climate change and inequity.



# Farmer Organizations Leading Change in Haiti

Program Impact Example

*“We strengthen farmer organizations to be the ones who take action to create better lives for themselves,”*

says Cantave Jean Baptiste, Director PDL, Groundswell’s partner organization in Haiti. “Communities are not empty bowls waiting for people to come and fill them up. They have dreams, plans, skills and capacity to take action.”

This is essential, because creating lasting change is not a matter of promoting one intervention or input. It is a matter of local people strengthening their organizations, constantly innovating to overcome obstacles, and creatively addressing new challenges as they arise.

PDL works with 15 farmers’ associations. They form agroecology committees to continuously experiment to improve farming practices. The associations have developed over 1,000 volunteer farmer promoters, who teach the key lessons to other farmers. They have helped 9,000 farmers create highly diversified agroforestry plots, called *chouk* (rooted) farms, that produce food 365 days a year for families despite Haiti’s challenging context.



Improved production doesn’t automatically equal improved family nutrition. Health promoters teach hygiene and healthy eating practices, focusing on how to balance the essential food groups harvested from local farms.

As production increases, farmers face the challenge of how to sell their produce and earn income, without depending on middle men and money lenders. To overcome this problem, the farmers establish their own savings and credit co-ops. Further, they so far have created 13 cooperative enterprises to process their cassava, peanuts, corn and sugarcane to feed local populations and to earn more income.

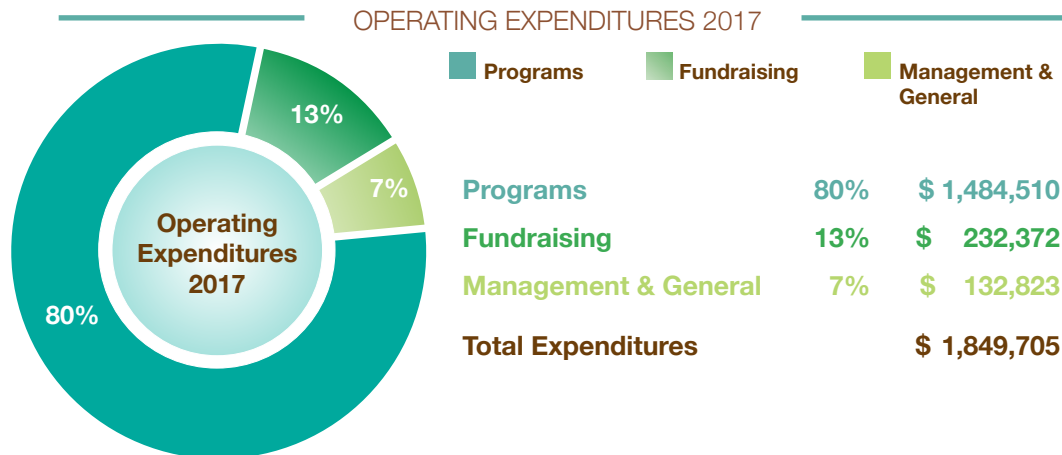


“PDL works with the communities to identify their available resources, so they can find a better way to use them and generate more income,” says Cantave. “When people take part in reflecting and finding solutions for the difficulties they face, and participate in creating the changes, I believe these changes will last. People come to feel they are the change.”

**Images:** Top right - farmer organization food production; top left - farmer enterprise processing sugar cane; bottom left - agroecological farming



We are profoundly grateful for the many generous donors who make our work possible.



## ASSETS

### Current Assets

Cash and Equivalents	\$598,936
Grants Receivable	\$189,089
Contributions Receivable	\$ 16,162
Prepaid Expenses	\$8,469
Deposits	\$ 1,725
<b>Total Current Assets</b>	<b>\$814,381</b>

### Long-Term Assets

Investments	\$ 2,243
Endowment	\$ 24,544
Property and Equipment, Net	\$ 820
<b>Total Long-Term Assets</b>	<b>\$ 27,607</b>
<b>Total Assets</b>	<b>\$841,988</b>

## LIABILITIES & NET ASSETS

### Current Liabilities

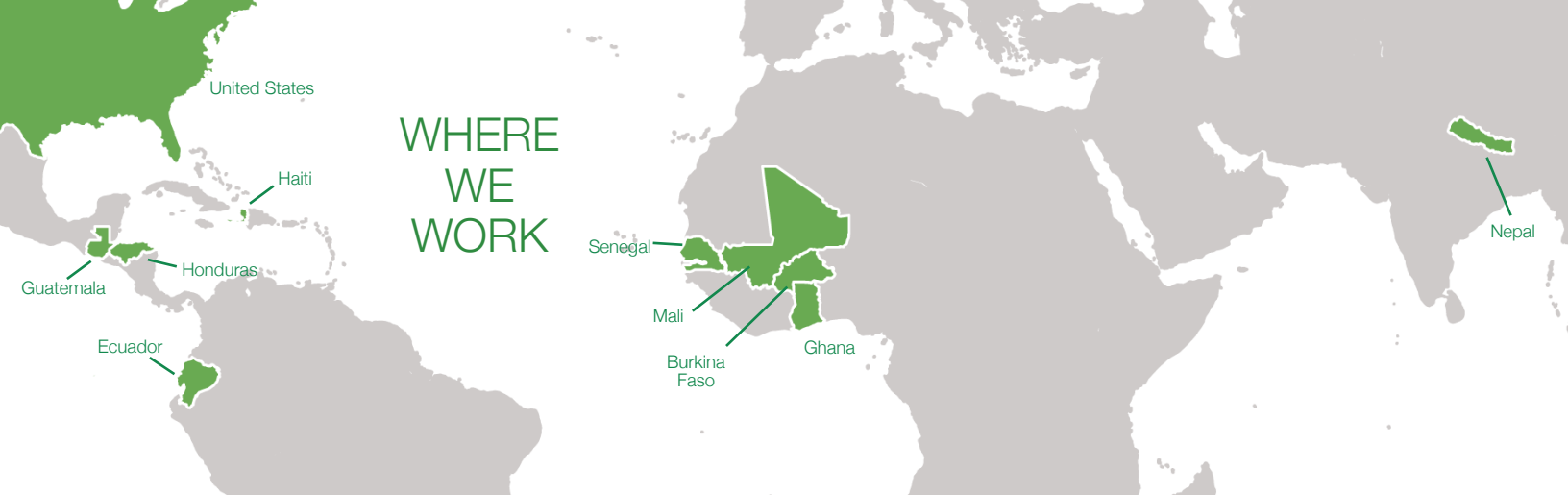
Accounts Payable	\$ 41,485
Partner Grants Payable	\$ 43,675
Deferred Grant Revenue	\$ 14,384
Accrued Vacation	\$ 3,987
<b>Total Current Liabilities</b>	<b>\$103,531</b>

### Net Assets

Unrestricted-Undesignated	\$136,490
Board Designated Endowment	\$ 24,194
<b>Total Unrestricted</b>	<b>\$160,684</b>
Temporarily Restricted	\$577,423
Permanently Restricted	\$ 350
<b>Total Restricted</b>	<b>\$577,773</b>
<b>Total Net Assets</b>	<b>\$738,458</b>
<b>Total Liabilities and Net Assets</b>	<b>\$841,988</b>

Unaudited Financials. FY 2017 audit is available on our website. Full financials available upon request.





## BOARD OF DIRECTORS

Eileen Oldag, Chair  
Consultant, Non-profit Organizational Development

Vance Russell, Vice-Chair  
Programme Development Manager Americas & Caribbean  
Fauna & Flora International

Mark Stone, Treasurer  
Retired, IMF / State Department, Meditation teacher

Ross Borja, Secretary, Board Representative of  
Groundswell's International Council  
Executive Director, EkoRural, Ecuador

Bernard Guri, Board Representative of  
Groundswell's International Council  
Executive Director, Center for Indigenous Knowledge and  
Organizational Development (CIKOD), Ghana

Perry Clutts, Board Member  
Owner & Organic Farmer, Pleasantview Farm  
Board Member, Organic Trade Association

Muthusami Kumaran, Board Member  
Assistant Professor of Nonprofit Management &  
Community Organizations, College of Agricultural & Life  
Sciences, University of Florida

Margaret (Peg) Malloy, Board Member  
Philanthropist and Real Estate Broker

Jan Mittendorf, Board Member  
Associate Director, Feed the Future Innovation Lab  
for Sustainable Intensification, Kansas State University

## STAFF

Steve Brescia, Executive Director

Christopher Sacco, Director of Strategic Initiatives

Rhonda Devan, Finance Director

Fatou Batta, Regional Coordinator for West Africa

Peter Gubbels, Director for Action Learning  
& Advocacy for West Africa

Melissa Nussbaum, Director of Donor Relations

Emi Seri, Operations Coordinator

Cecili Thompson Williams & Lilli Dellheim, We Divine  
Water, Communications

## GET INVOLVED

- Sign Up for Our Newsletter
- Become a donor: Invest in concrete, efficient actions to support positive change in rural farming communities around the world.
- Explore: Watch videos and read articles to learn more about our work
- Spread the Word: Tell your friends and family about what Groundswell is doing and the global challenges we are working to overcome
- Champion: Invite others to join our cause

Learn more at [www.groundswellinternational.org](http://www.groundswellinternational.org).



[www.groundswellinternational.org](http://www.groundswellinternational.org)

1875 Connecticut Avenue NW, 10th Floor  
Washington, DC 20009

Questions? Call at 202.832.9352 or contact us at [info@groundswellinternational.org](mailto:info@groundswellinternational.org).

Groundswell is a 501c3 nonprofit and a member of the Guidestar Exchange.  
Donations are tax deductible and secure.